



KANSAS GEOLOGICAL SOCIETY

BULLETIN

Volume 100 Number 1

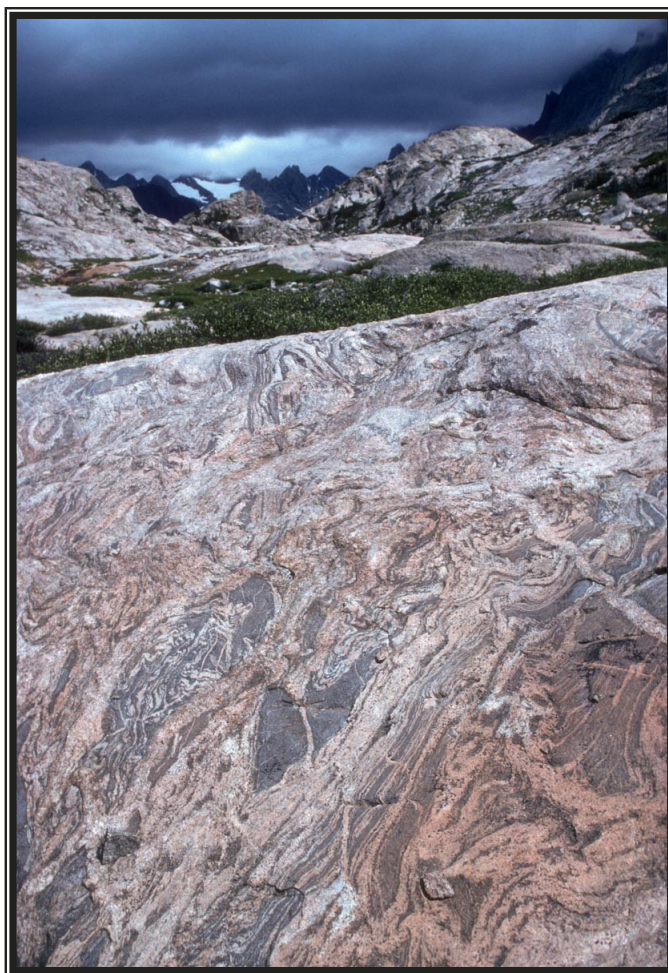
January - February 2026

Established 1925

IN THIS ISSUE

KGS President's Letter

pages 8-9



Your 1/8 page ad here

**Use Your KGS Library
For All Your Printing Needs**

Old photos?
Old documents?

We can scan them for you!

Robert F. Walters Digital Library

The most complete source for Kansas data

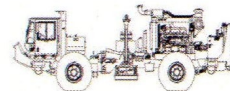
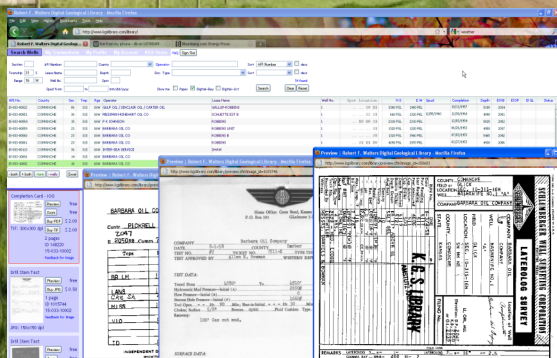
Database updated nightly

Day or Night

You can get to the data as you need it

www.kgslibrary.com

To Join: call 316-265-8676



**Proudly Celebrating 25+ Years
Acquiring Seismic Data Throughout the
Continental United States**

WICHITA

Nicolle Jausel
(316) 636-5552
Nicolle@parangeo.com

DENVER

Kim Nordberg
(303) 888-8885
Knordberg@parangeo.com

HOUSTON

Brent Propst
(832) 643-5158
Bpropst@parangeo.com

OKLAHOMA CITY

Joe Broussard
(405) 213-9859
Jbroussard@parangeo.com

website: www.parangeo.com

We Invite You

To join the

***Kansas Geological
Foundation***

***\$50.00 membership is
tax deductible***

Call 316-265-8676

Or send checks to:

Kansas Geological Foundation

1704 S. Baehr

Wichita, KS 67209

Table of Contents

Features:

KGS Events: **no events scheduled**

Departments & Columns:

KGS Tech Talks	4
Advertiser's Directory	7
In Memoriam	14
Professional Directory	15
Kansas Geological Foundation Cornerstone and KGF News	18-20
Kansas Geological Foundation Memorials	21-23

ON THE COVER:

Archean Migmatite Gneiss Wyoming

Photo by Marli Miller

The Kansas Geological Society Bulletin, which is published bimonthly in electronic format, seeks short papers dealing with any aspect of Kansas geology, including petroleum geology, studies of producing oil or gas fields, and outcrop or conceptual studies. Maximum length of papers is 6 pages as they appear in the Bulletin, including text, references, figures and/or tables, and figure/table captions. Inquiries regarding manuscripts should be sent to manager@kgslibrary.com or mailed to 1704 S. Baehr, Wichita, KS 67209. Specific guidelines for manuscript submission appear in each issue of the Bulletin, which can also be accessed on-line at the Kansas Geological Society web site at <http://www.kgslibrary.com>

SOCIETY Technical Meetings

All Technical Meetings will be on Zoom

No tech meetings scheduled

Please remember to check the website for the most up to date information on Technical Talks

<http://www.kgslibrary.com/techtalks.cfm>

Note: For those geologists who need 30 professional development hours (pdh) to renew their licenses, there will be a sign-in sheet at each presentation and also a certificate of attendance.



The New Home of the KGS

1704 S. Baehr

KANSAS GEOLOGICAL SOCIETY



BOARD OF DIRECTORS

PRESIDENT

Kimberly Black

PRESIDENT-ELECT

Tyler Sanders

SECRETARY

Kyle Day

TREASURER

Jared Lies

DIRECTORS

Ryan Davis

Seth Evenson

Richard Jordan

ADVISORS

Doug Louis

Ryan Dixon

BULLETIN STAFF

EDITOR

Wes Hansen (316) 772-6188

ADVERTISING

Kent Scribner (316) 640-1154

MEMORIALS

Wesley Hansen (316) 772-6188

STATE SURVEY

KS Geological Survey (785) 864-3965

SOCIETY NEWS

KGS Library (316) 265-8676

MANAGER

(316) 265-8676

COMMITTEE CHAIRMEN

Advertising

Kent Scribner

AdvisoryAnnual Banquet

Doug Davis

Bulletin

Wesley Hansen

Computer CommitteeContinuing EducationDistinguished Awards

Brian Fisher

Environmental

Kent Matson

Field Trip

Jerry Honas

Fishing TournamentFuture PlansGolf

Dave Barker

Historian

Ted Jochems

Library

Larry Friend

Membership

John H. Morrison, III

NomenclaturePicnic

Beth Isern

Public RelationsShooting Tournament

Seth Evenson

Technical Programs

Doug Davis

Technical Committee

Ryan Dixon

Finance Committee

Members: Chuck Brewer,

David Doyel, Paul Gunzelman and Tom Funk

K.G.S. LIBRARY

PHONE 316-265-8676 FAX 316-265-1013

email: frontdesk@kgslibrary.com or

Web: www.kgslibrary.com

A.A.P.G. DELEGATE

Dennis Hedke

2026

The KGS *Bulletin* is published bi-monthly by the Kansas Geological Society, with offices at 1704 S. Baehr, Wichita, Kansas 67209 Copyright 2024, The Kansas Geological Society. The purpose of the *Bulletin* is to keep members informed of the activities of the Society and to encourage the exchange and dissemination of technical information related to the Geological profession. Subscription to the *Bulletin* is by membership in the Kansas Geological Society. Limited permission is hereby given by the KGS to photocopy any material appearing in the KGS *BULLETIN* for the non-commercial purpose of scientific or educational advancement. The KGS, a scientific society, neither adopts nor supports positions of advocacy, we provide this and other forums for the presentation of diverse opinions and positions. Opinions presented in these publications do not reflect official positions of the Society.



Nine Trucks Serving

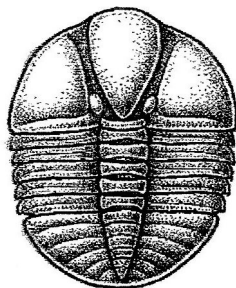
Kansas--Colorado--Texas--Nebraska--Illinois

DST's

Back Pressure testing (G1 7 G2)

Slick line services using the same Weatherford

Electronic Pressure Gauges used on DST's



1-800-728-5369

FAX 1-785-625-5620

www.trilobitetesting.com

trilobite@eaglecom.net

SHOPS LOCATED IN:

Hays, KS

Scott City, KS

Pratt, KS

Oberlin, KS

CAN YOU NAME THE CRITTER?

Sponsored by Trilobite Testing, Inc.

Is your paleo up to date?

If you know the name of the trilobite,
submit your guess via e-mail to
manager@kgslibrary.com

Remember that *Trilobite Testing* is
sponsoring your efforts, so be sure to thank
Paul Simpson the next time you see him.

**Bulletin committee members and PhD's in
Paleontology are prohibited from entering.**



**AAPG Image August 17-20, 2026
Houston, TX**

ADVERTISER'S DIRECTORY

Duke Drilling	<i>page</i> 24
Kansas Geological Foundation	18
Murfin Drilling Company, Inc	24
PARAGON Geophysical Services, Inc	2
Professional Directory	15
Trilobite Testing	6
Walters Digital Library	2

Log in to
Walters Digital Library At
www.kgslibrary.com

Log in as our guest
and see the Society's Database

A convenient way to see what you might want to
order!

Call or email your order to:

316-265-8676

frontdesk@kgslibrary.com

ADVERTISER'S RATES: 2025

Full Page	B&W	Color
6 issues	\$2,000	\$2,500
3 issues	\$1,080	\$1,325
1 issue	\$480	\$525
1/2 Page		
6 issues	\$1,000	\$1,500
3 issues	\$540	\$825
1 issue	\$225	\$350
1/4 Page		
6 issues	\$600	\$900
3 issues	\$325	\$525
1 issue	\$150	\$250
1/8 Page		
6 issues	\$300	\$500
3 issues	\$175	\$325
1 issue	\$75	\$185
Professional Ad (Business Card)		
6 issues	\$90	\$180

KGS President's Letter

Dear Friends and Colleagues of the Kansas Geological Society,

Happy New Year to all! I am pleased to introduce the new members to our 2026 Board of Directors. Mr. Tyler Sanders is joining us as Vice President/President Elect. Mr. Kyle Day has been elected Secretary/Treasurer, and Mr. Dick Jordan joins as Director at Large. Members continuing to serve include Mr. Jarred Leis, our 2026 Treasurer, Mr. Ryan Davis, Director at Large, and Mr. Seth Evenson, Director at Large. Thank you, gentlemen, for your service to our Society and membership. I look forward to working with all of you in the coming months.

My advisors this year are Mr. Doug Louis and Mr. Ryan Dixon. I believe they will both be invaluable resources in navigating the issues we are facing this year. Thank you, gentlemen, for the hours of counsel you have already contributed. I could not fill this role without a team willing to jump in with thoughtful advice and assistance.

I would like to take a moment to offer a special thanks to all of the members of the 2025 Board of Directors. We started last January facing unprecedented challenges in our organization. There has never been a Board simultaneously facing the staffing and financial issues we all inherited before even convening our first meeting. A special thanks goes out to Seth Evenson, for volunteering countless hours in the library, and volunteering to serve as interim manager when few other viable options existed. Every week seemed to bring a new issue to address, and it was a thankless job. He was not alone in spending hours keeping the doors open. Mr. David Barker and Mr. Doug Davis also stepped in on countless occasions. If you see any of these gentlemen, please thank them for their contributions.

Finally, I would be remiss in not offering a heartfelt thanks to Rhonda Wisely. After many years of service, Rhonda had expressed a desire to retire in 2025. She has graciously agreed to postpone retirement to help us reorganize and recalibrate. I recognize the sacrifice in choosing to stay another year to help, so, Rhonda, thank you for hanging in there and going beyond the extra mile.

For those of you who have not been to the library recently, Jennifer Tafolla was hired in December. Her official title is Receptionist/Reproduction Tech, but Ms. Tafolla has an extensive background in multiple aspects of business, and I expect she will quickly become our go-to guru. So, if you have not been to the library in a few, stop in and introduce yourself.

2025 was a chaotic year for our Society, but 2026 will also bring challenges. There is discussion currently happening around the merits of moving the WDL away from the Survey. Our mortgage balloons this summer and will either need to be paid off or refinanced. I expect these two items alone will absorb a great amount of the Board agenda every month and are decisions that will affect both future Boards and the membership at large. As such, I believe it is important to review our by-laws and ensure we are acting in accordance with our original charter.

In reviewing the by-laws, the following rules apply to meetings:

Article IV — MEETINGS

Section 1. REGULAR MEETING — This Society shall hold not less than one regular meeting per

month, unless the Board of Directors specifically decides to omit such meeting for a month.

Section 2. SPECIAL MEETING — A special meeting can be called by the Board of Directors, or by petition of ten members in good standing.

Section 3. ANNUAL MEETING — An annual meeting of this Society must be held. This annual meeting shall be held in December. Announcement of newly elected officers shall be made at this meeting; and the President and Treasurer, and such committee chairpersons as requested by the President, shall make full reports of the year's activities to the membership.

Our monthly meetings were originally intended to be Society meetings- membership meetings similar to a town hall. For as long as I can remember, the majority of the meetings have been held at the Petroleum club, and the space itself was not conducive to broad membership participation. In 2026, all meetings will be held at the KSG Library, with dates and times posted on the KGSL webpage. Our first meeting will be Thursday, January 22nd at noon. All members are welcome and encouraged to attend and participate.

If the political and economic forecasts hold true, I believe we can expect 2026 to be a year of stagnant oil prices and limited incentive for exploration. Geologists as a whole are resilient. It takes a special mindset to look at an area where teams of bright people have utterly failed in the past and envision success. The confidence to pitch that idea and raise capital to bring it to fruition requires a comfort with risk (and, frankly, a brand of swagger) that is admirable. We have all weathered poor economic environments, and many of us reflect on times that were better, or harder, or somehow fundamentally different than what we are facing now. Our resilience, creativity, and tenacity allow us to evolve, to change with time, technology, economic and cultural factors beyond our control to thrive in the good times and survive when the metric is less favorable.

The challenges of this year will bring forth some of the more sensitive issues we often try to avoid- discussions regarding interfacing with government (politics- yuck), how we manage money and view debt. Our opinions are often shaped by our world views in a way that is personal to each of us. I want to encourage open discourse and debate, but to remind all to be patient, open-minded, and thoughtful in how we engage with our fellow members. One project for 2025 has been an update of our directory (big thanks to Jarred Leis for spearheading this effort). There is no doubt we are losing long-time members faster than we are gaining new people in the Society. It is more important than ever that we work to find compromise that serves all of our membership to the best of our ability.

I look forward to the challenges we face this year and hope to hear from many of you as we press forward into a new year and new chapter.

Yours in service,

Kimberly Black

2026 Kansas Geological Society President

Editor's Page

Dear KGS members and friends,

I had a long phone conversation with VP-President Elect, Tyler Sanders, the other day. Tyler and I both agree that the membership needs to have regular, perhaps spontaneous, social gatherings after the work day. Not those that seek donations to pay for food or beverages, but pay your way events. As one of the old farts in this society, I remember in many years past that Bob Slamal would leave a paper holder on the front desk of the KGS Library with two feathers in it. This sign invited those interested to go to the Two Feathers Bar and Grill, located a block and a half from the front entrance of the Library. That local establishment is long gone. These get-togethers were an opportunity to visit with our colleagues and friends over a beer or two. Not to swab secrets from others but just to see if others needed help or had upcoming work for others.



As times have changed, our local area members are scattered to various parts of Wichita. Primarily on the east side, with others in the Old Town or Delano districts. We no longer get 150-200 members to show up for a KGS Picnic or Banquet. Those numbers are no longer even possible. At present, we are in another slow down in our industry. Believe me, I know that all too well. In the coming weeks and months, I'm going to ask Doug Davis to send out a quick email divulging the time and location of one of these social gatherings. I had long hoped to have a small tiki bar set up in a small outdoor space at our library, but alas, that spot is overgrown with weeds and saplings. We shall see how this attempt goes, but I'm hoping for a positive response.

On a sad note, we have been informed of the passing of Roger Friedly, owner of Diamond Testing. Old well sitters like myself, knew Roger well. I remember him as the most meticulous tester that I ever had the pleasure of working with. Diamond Testing was always a great benefactor of KGS activities.

As always, give me a shout via phone, text or email.

Wes Hansen (316)-772-6188 email: whansen4651@sbcglobal.net

2026 KGS Board

President - Kimberly Black

VP-President Elect - Tyler Sanders

Secretary - Kyle Day

Treasurer - Jared Lies

Directors - Ryan Davis Seth Evenson

Richard Jordan - Director at Large

**We Invite You
To join**

***Kansas
Geological
Foundation***

***\$50.00 membership is
tax deductible***

Call 316-265-8676

Or send checks to:

Kansas Geological Foundation

1704 S. Baehr

Wichita, KS 67209

Your Company

1/4 page ad

here

An Open Invitation to Young Geologists to Join AAPG

I would like to extend a special invitation to recent graduates and other young geological professionals to join AAPG. There are many young geologists outside the Wichita area that I have never met. They may work out of Great Bend or Hays, Kansas working with smaller oil and gas producers or working on their own as well site geologists. Kansas does have a future for the foreseeable future. The time is now to meet others from larger regional companies to forge a relationship for future employment. Young minds will be needed to replace those retiring and that other bad option.

I joined AAPG late in my career, much to my regret. I now serve voluntarily on the AAPG MCS committee for our convention in Oklahoma City from October 7-9, 2025.

Respectfully yours,

Wesley D. Hansen Bulletin Editor



Robert F. Walters Digital Library

Log in as our Guest

username: guest

password: guest



316-265-8676

**Let Us Print Your Geo Reports
And Save Your Time For Finding More Oil & Gas**

Top Quality Color Printing For Our Membership

Email your files to: kgsorders@gmail.com

**Get Your Maps copied at the KGS library
We can scan, copy, and print up to 44" wide**

Color or Black & White

Solid Color @ \$4.00/sq. ft.

Line maps with color @ \$3.00/sq. ft.

In Memoriam

KGS and Industry Members Lost in 2025 and 2026

2025

James Ross Baird

William H. Petersen

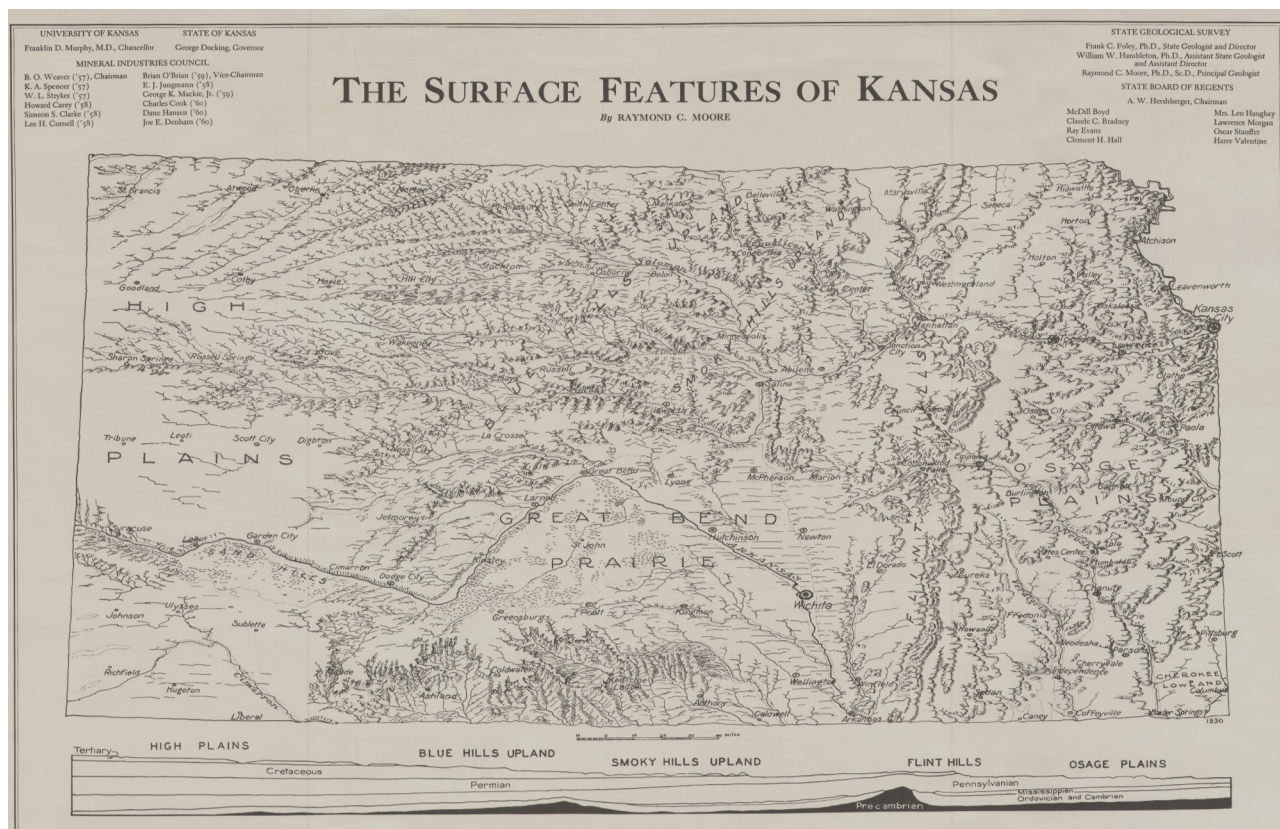
Dennis Michael Gleason

Timothy Dean Hellman

Jay McNiel

2026

Roger Friedly



PROFESSIONAL DIRECTORY

Kuljeet Kaur
Geophysical Consultant
kuljeetiitkgp@gmail.com
785-317-5284
405 Blue Spring Drive
McKinney, Tx -75072





- Geophysicist with 16 years at Woolsey Operating; Seismic acquisition and processing support;
- Basic Seismic Solutions (Prospects Evaluation): 2D-3D Seismic Interpretation; Geological & geophysical data integration; Structural & Stratigraphic Interpretation
- Advanced Seismic Solutions: 3D Dip Analysis (Structure Mapping); Curvature Analysis (Fracture Mapping); Coherence and Fault Attributes; Seismic Impedance & 3D Porosity Maps, AVO Attributes; Spectral Decomposition; Detailed Petrophysical Analysis

Macklin Armstrong
Consulting Geologist
Kansas - Colorado - Nebraska
Wellsite Supervision Prospect Evaluation
armstrong.mac@gmail.com
316-209-5047

WESLEY D. HANSEN
Consulting Geologist
Well site Supervision • Geologic Studies
PO Box 46 Whitewater, KS 67154
Office/Mobile: (316) 772-6188
whansen4651@sbcglobal.net
Kansas - Colorado - Nebraska
44 Continuous Years in the Oil Patch

M. ((Brad))ford Rine, Geologist
Licensed, Registered, Certified

PROSPECT EVALUATION	PROSPECT ORIENTATION
WELLSITE SUPERVISION	DRLG/COMPL CONSULTATION
RESERVOIR STUDIES	PROPERTY EVALUATION
EXPERT TESTIMONY	BANJO PICKER
100 South Main Suite #415 Wichita, Kansas 67202	Email: rinemb@sbcglobal.net Office & Cell: (316) 250-5941

Covey - The Well Watchers
“One Thousand Wells and Counting”

Curtis E. Covey Wellsite Petroleum Geologist
Gas Trailer Cell: 316-217-4679 Office: 316-776-0367
Email: wellsitgeo1@gmail.com
6548 Bedford Circle Derby, Kansas 67037
Gas Detection Trailer & Internet/Phone Communications

ROGER L. MARTIN
Independent Petroleum Geologist
200 E 1st St, Ste 405, Wichita, KS 67202
Cell: 316-833-2722 Office: 316-250-6970
KS Field Cell: 316-655-1227
Email: rogermartingeo@yahoo.com

Kirk Rundle
Consulting Geophysicist
*3D Seismic Design, Acquisition to Processing QC.,
Interpretation and Analysis, Subsurface Integration*
7340 W. 21st. N., Ste. 100
Wichita, Kansas 67205
Office: 316-721-1421 Fax: 316-721-1843
Email: kirk@rundlegeo.com

**Your business card ad
Could be right here
For only \$90/year**

**Your business card ad
Could be right here
For only \$90/year**

*The KGS Library is pleased to
announce a new service*



Creating
LAS files
from our logs
or yours

**\$20.00 per
curve!!**

**Quick
turn-around**

Send us your log file
or tell us which of
ours you would like
converted.

316-265-8676



**Kansas Geological
Foundation
Video / DVD Collection**

The KGF has an extensive
collection of
videos available for check-out at
no charge.

Only pay for shipping back.

These are ideal for classroom or
general public viewing.

See the web for titles &
descriptions

www.kgfoundation.org

Call 316-265-8676

Ask for Rhonda to check
out videos

A shout out to Kansas Oil and Gas Industry

Service Companies

WTI oil price is hovering around \$60 per barrel

Now is the time to resume advertising in the KGS Bulletin

**Let our several hundred members know that your company is
still active and ready to work.**

Your half page ad would look great here.

Color or black and white

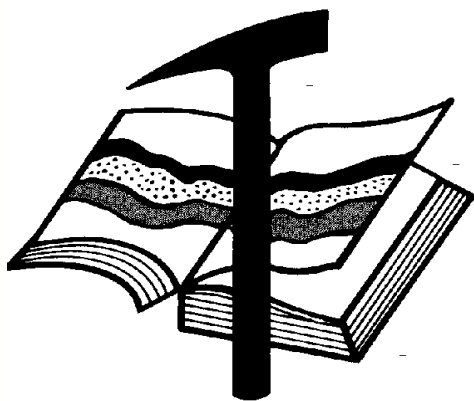
Contact Kent Scribner at 316-640-1154

KGS members please check your files

Fellow KGS members, please remember to check your files of elogs and geologist reports against the KGS paper library and the WDL before discarding them. I was contacted by John Morrison recently about a well I watched years ago that had some tops and DST info missing from his completion card. I took pics from my geo report of tops and DST results and sent them to John to update his card data. If I was to go through all of my files, I'm sure I have many logs and geo reports that are not in the files of either the KGS paper or the WDL. Before I hang things up in my career, I vow to go through all of my data and get it donated and scanned.

KCC rules allow an operator to hold information confidential for a two year period. As long as the well in question is older than the two year period, one can release the data. If one has concerns about alienating a client, of course, feel free to ask for permission.

Wes Hansen



Kansas Geological Foundation

Web Site: www.kgfoundation.org

**212 North Market
Wichita, Kansas 67202**

A not-for-profit educational and scientific corporation

GOALS:

- promote geology and earth science
- preserve geological records
- establish memorials and endowments
- support field trips and seminars
- financial aid and grants to students

PLEASE HELP SUPPORT THE FOUNDATION

Kansas Geological Foundation Services

The Kansas Geological Foundation provides the following services as a part of the organization's commitment to educate the public regarding earth science.

Speaker's Bureau

A list of speakers available to talk about various aspects of geology may be obtained by contacting Wes Hansen at the KGS Library, 265-8676. This service is free to the public.

DVD/Videotape Library

The KGF maintains a DVD & videotape library focused primarily on the various fields of earth science. These tapes may be checked out without charge by the public. To obtain a list of tapes, please contact the KGS Library, 1704 S, Baehr Wichita, KS 67209 or call Wes Hansen at 265-8676.

The Kansas Geological Foundation was founded in March, 1989 as a not-for-profit corporation under the guidelines of section 501(c)(3) of the tax code to provide individuals and corporations the opportunity to further the science of geology. It is dedicated to providing charitable, scientific, literary and educational opportunities in the field of geology for the professional geologist as well as the general public.

KGF can receive in-kind donations through which the donor may receive a tax deduction. Of equal importance, the KGF provides the financial resources to sort, process and file this data at the KGS library. If you have a donation to make, please contact the KGF at 265-8676.

Your tax-deductible membership donation helps to defray the cost of processing donations and to support public education programs about the science of geology. Annual membership begins at \$50.00 per year. Donations of \$100.00 or more are encouraged through the following clubs:

Century Club	\$ 100 to \$ 499
\$500 Club	\$ 500 to \$ 999
Millennium Club	\$1000 to \$5000
President's Club	\$5000 and over

Kansas Geological Foundation

Kansas Geological Foundation News

Spring 2026 KGF Scholarship Recipients

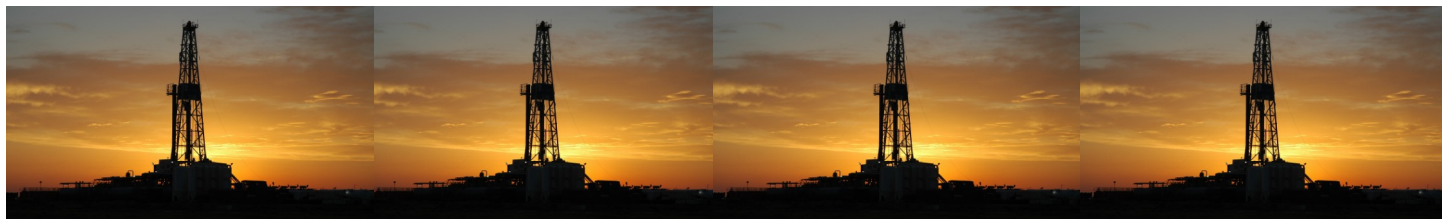
Name	University	Scholarship	Amount
Laikyn Coursen	University of Kansas	KGF Scholarship	\$1000.00
Ethan Geiger	University of Kansas	KGF Scholarship	\$1000.00
Andrew Price	Fort Hays State Univ.	KGF Scholarship	\$1000.00
Kaden Moses	Fort Hays State Univ.	KGF Scholarship	\$1000.00

KGF Grants

Sarah Lamm, PhD candidate at KU

\$3500.00 for Rocks and Rockets Event in Colby, Kansas

August 2026



Kansas Geological Foundation News

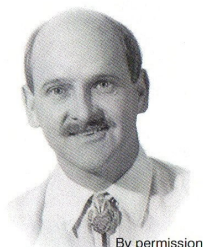
Students: The KGF awards scholarships each December and May. Check with your department chairs for applications. You must submit complete applications by the deadline.

Scholarship Applications for the Fall semester will be due by May 1, 2026.

Scholarship Applications for Spring semester will be due by December 1, 2026

Grants to help with research on Kansas related geology are also considered for aid.

The Kansas Geological Foundation Needs You!



The KGF provides the financial resources to sort, process and file, in-kind donations of geological data at the KGS library. Due in large part to the KGF this unique and rare well of information is being made available to all. Please consider telling your company management and colleagues about the benefits of a library that continues expanding in part because of the KGF.

We very much value and need your financial support.

KGF Officers and Board Members

Executive Director/Treasurer	Kerry Parham
President -	Beth Isern
Vice President -	Rusty Mourning
Secretary -	Tom Dudgeon

Board Members

Nick Hixson Dennis Hedke
Toby Eck Cristina Goodrich

Scholarships - Nick Hixson
Grants - Dennis Hedke
Publicity - Wes Hansen

**PLEASE SUPPORT THE INTEGRATION PROJECT BY DONATING
FINANCIALLY TO THE KANSAS GEOLOGICAL FOUNDATION**

Kansas Geological Foundation Memorials

KGS Member	Date Deceased	Memorial Established
Dan Bowles	09/89	1990
John Brewer	10/89	1990
George Bruce	08/89	1990
Robert Gebhart	01/90	1990
Ray Anderson, Jr.	11/90	1990
Harold McNeil	03/91	1991
Millard W. Smith	08/91	1991
Clinton Engstrand	09/91	1991
M.F. "Ted" Bear	10/91	1991
James & Kathryn Gould	11/91	1991
E. Gail Carpenter	06/91	1993
Benton Brooks	09/92	1992
Robert C. Armstrong	01/93	1993
Nancy Lorenz	02/93	1993
Norman R. Stewart	07/93	1993
Robert W. Watchous	12/93	1993
J. George Klein	07/94	1994
Harold C.J. Terhune	01/95	1995
Carl Todd	01/95	1995
Don R. Pate	03/95	1995
R. James Gear	05/95	1995
Vernon Hess	06/95	1995
E. K. Edmiston	06/95	1995
Jack Rine	07/95	1995
Lee Cornell	08/95	1995
John Graves	10/95	1995
Wilson Rains	10/95	1995
Heber Beardmore, Jr.	09/96	1996
Elmer "Lucky" Opfer	12/96	1996
Raymond M. Goodin	01/97	1997
Donald F. Moore	10/92	1997
Gerald J. Kathol	03/97	1997
James D. Davies	08/88	1997
R. Kenneth Smith	04/97	1997
Robert L. Dilts	05/97	1997
Delmer L. Powers	06/72	1997
Gene Falkowski	11/97	1997
Arthur (Bill) Jacques	01/98	1998
Bus Woods	01/98	1998
Frank M. Brooks	03/98	1998
Robert F. Walters	04/98	1998
Stephen Powell	04/98	1998
Deane Jirrels	05/98	1998
William G. Iversen	07/98	1998
Ann E. Watchous	08/98	1998
W.R. "Bill" Murfin	09/98	1998
Donald L. Hellar	11/98	1998
Joseph E. Rakaskas	01/99	1999
Charles W. Steincamp	02/99	1999
Robert and Betty Glover	10/96	1998
Howard E. Schwerdtfeger	11/98	1999
W. W. "Brick" Wakefield	03/99	1999
V. Richard Hoover	01/00	2000
Warren E. Tomlinson	01/00	2000
James A. Morris	01/00	2000
Eric H. Jager	03/00	2000
Kenneth W. Johnson	03/00	2000

Kansas Geological Foundation Memorials

KGS Member	Date Deceased	Memorial Established
Dean C. Schaaake	03/00	2000
Fred S. Lillibridge	05/00	2000
Jerry A. Langrehr	07/00	2000
Clark A. Roach	07/00	2000
Floyd W. "Bud" Mallonee	10/00	2000
Ralph W. Ruuwe	09/00	2000
Robert L. Slamal	02/01	2001
Jerold E. Jespersen	06/01	2001
William A. Sladek	06/01	2001
Harlan B. Dixon	06/01	2001
Edward B. Donnelly	08/01	2001
Richard P. Nixon	02/02	2002
Robert W. Frensley	12/01	2002
Gerald W. Zorger	01/02	2002
Don L. Calvin	03/02	2002
Claud Sheats	02/02	2002
Merle Britting	2002	2002
Harold Trapp	11/02	2002
Donald M. Brown	11/02	2003
Elwyn Nagel	03/03	2003
Robert Noll	09/03	2003
Benny Singleton	09/03	2003
Jay Dirks	2003	2003
J. Mark Richardson	02/04	2004
John "Jack" Barwick	02/01	2004
Richard Roby	03/04	2004
Ruth Bell Steinberg	2004	2004
Gordon Keen	03/04	2004
Lloyd Tarrant	05/04	2004
Robert J. "Rob" Dietterich	08/96	2004
Mervyn Mace	12/04	2004
Donald Hoy Smith	04/05	2005
Richard M. Foley	06/05	2005
Wayne Brinegar	06/05	2005
Charles B. Moore	09/96	2005
Jack Heathman	05/06	2006
Charles Kaiser	09/06	2006
Rod Sweetman	08/06	2006
Karl Becker	10/06	2006
Frank Hamlin	10/06	2006
Marvin Douglas	12/06	2006
Robert W. Hammond	04/07	2007
Eldon Frazey	04/07	2007
Pete Amstutz	05/07	2007
Charles Spradlin	05/07	2007
Donald R. "Bob" Douglass	09/07	2007
Vincent Hiebsch	11/07	2007
Glen C. Thrasher	03/08	2008
Peg Walters	06/08	2008
Theodore "Ted" Sandberg	07/08	2008
James Ralstin	11/08	2008
Earl Brandt	04/09	2009
Walter DeLozier	05/09	2009
Don D. Strong	1/10	2010
John Stone	02/10	2010
Craig Caulk	03/10	2010
Joseph E. Moreland, Jr.	03/10	2010

Kansas Geological Foundation Memorials

KGS Member	Date Deceased	Memorial Established
Gene Garmon	03/10	2010
James F. Dilts	05/10	2010
Jerry Pike	05/10	2010
Donald Hollar	06/10	2010
Delbert Costa	08/10	2010
John Tanner	08/10	2010
William (Bill) Owen	09/10	2010
Harold (Hal) Brown	10/10	2010
Edmund G. Lorenz	11/10	2010
Thomas E. Black	05/11	2011
Wayne E. Walcher	07/11	2011
Henry F. Filson	07/11	2011
Thomas Ray	07/11	2011
Edgar E. Smith	09/11	2012
Marilyn Messinger	06/13	2013
Micheal Mitchell	09/13	2013
Orvie Howell	11/13	2013
James Thompson	11/13	2013
Dick Rowland	09/13	2014
Robbie Thompson	12/13	2014
Kris Kennedy	04/14	2015
Annette Hedke	02/15	2015
James Devlin	04/15	2015
Robert Gensch	09/15	2015
Jerald Rains	05/16	2016
Max Houston	05/16	2016
Robert "Gus" Messinger	01/17	2017
Jimmy Wayne Gowens	04/17	2017
Walter H. Martz Jr.	01/18	2018
Gary Sandlin	01/17	2018
Douglas McGinness	12/16	2018
Allen Siemens	06/18	2018
Ernest R. "Ernie" Morrison	09/18	2018
E. G. "Elbie" McNeil	12/18	2018
Robert Maxwell (Bob) Euwer	1/19	2019
J. Fred Hambright	12/18	2019
W. Lynn Watney	7/19	2019
Byron Hummon	12/18	2019
Mike Raymond	11/19	2019
James Roberts, Jr.	3/19	2019
Herb Johnson	8/19	2020
Lloyd Parrish	2/20	2020
Bruce Reed	5/20	2020
Bob Scull	6/20	2020
Thornton E. Anderson	7/20	2020
Don Shawver	12/16	2020
Phillip Hart	12/20	2021
Timothy Lauer	05/21	2021
Fredrick Stump	09/21	2021
Larry J. Richardson	10/21	2021
Robert Cowdery	12/23	2023
Bill Ham	12/21	2023
Richard "Steve" Davis	08/24	2025
Dennis Michael Gleason	11/25	2026

18 Drilling Rigs
To depth of 9,500 ft.



WESTERN KANSAS
SOUTHERN NEBRASKA
EASTERN COLORADO
OKLAHOMA PANHANDLE

For contract information contact:

William Murfin
Drilling Manager

316-258-8888 (Direct)
316-267-3241 (Main)

250 N. Water, Ste. 300
Wichita, KS 67202

DUKE
DRILLING COMPANY
ROTARY DRILLING CONTRACTOR
620 Hubbard PO Box 823
Great Bend, KS 67530
100 S. Main, Ste. 410,
Wichita, KS 67202

Your Company

1/8 page ad here

BULLETIN CONTENT POLICY

Effective January 1, 2018, only ads for service companies and geologists offering their services will be permitted in the KGS Bulletin. Furthermore, only content of geologic interest or official KGS functions (technical talks, annual banquet, golf tourney, picnic etc.) will be permitted in this bulletin. This policy is in keeping with maintaining a professional standard for this publication. Any interpretation of this policy rests solely with the editor of this bulletin.



AAPG Needs You!

Professional geoscientists, share your world!

The Mid Continent Section has **17 AAPG Student**

Chapters, but only **3 Visiting Geoscientists**...which makes it almost impossible to have a professional geoscientist visit to each school at least once a year or even once every two years. The aim of AAPG's program is to give students a flavor of a professional life in energy resources. It also hopes to encourage dialog between industry and academia.

To be a Visiting Geoscientist bearing the AAPG flag, you are asked to have at least 5 years of experience and make at least one visit per year to a university. It can be a school with an AAPG Student Chapter, or a college/university without one. Your choice.

The Mid Continent schools with Student Chapters are: Missouri University, Fort Hays State University, Iowa State University, Kansas State University, Missouri State University, University of Nebraska, Northwest Missouri State University, Oklahoma State University, University of Oklahoma, University of Arkansas, University of Iowa, University of Kansas, University of Missouri, Columbia University of Tulsa and Wichita State University.

Contact Robbie Gries, co-Chair VGP committee, Denver, if you are interested in learning more. rrgries@aol.com

January 2026

Sun	Mon	Tue	Wed	Thu	Fri	Sat
				1 KGS Closed	2	3
4	5	6	7	8	9	10
11	12	13 KGS Board	14	15	16	17
18	19	20	21 KGF Board	22	23	24
25	26	27	28	29	30	31

February 2026

Sun	Mon	Tue	Wed	Thu	Fri	Sat
1	2	3	4	5	6	7
8	9	10 KGS Board	11	12	13	14
15	16	17	18 KGF Board	19	20	21
22	23	24	25	26	27	28